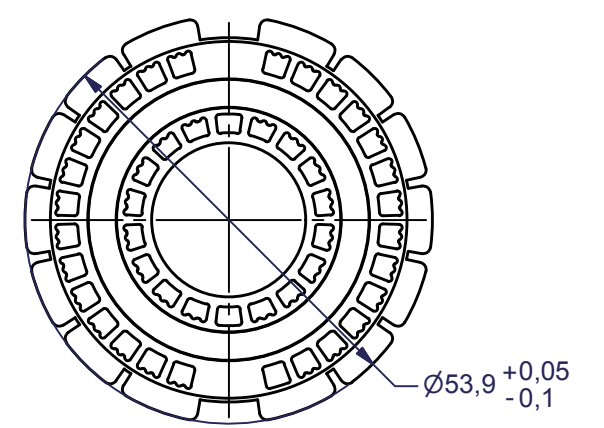
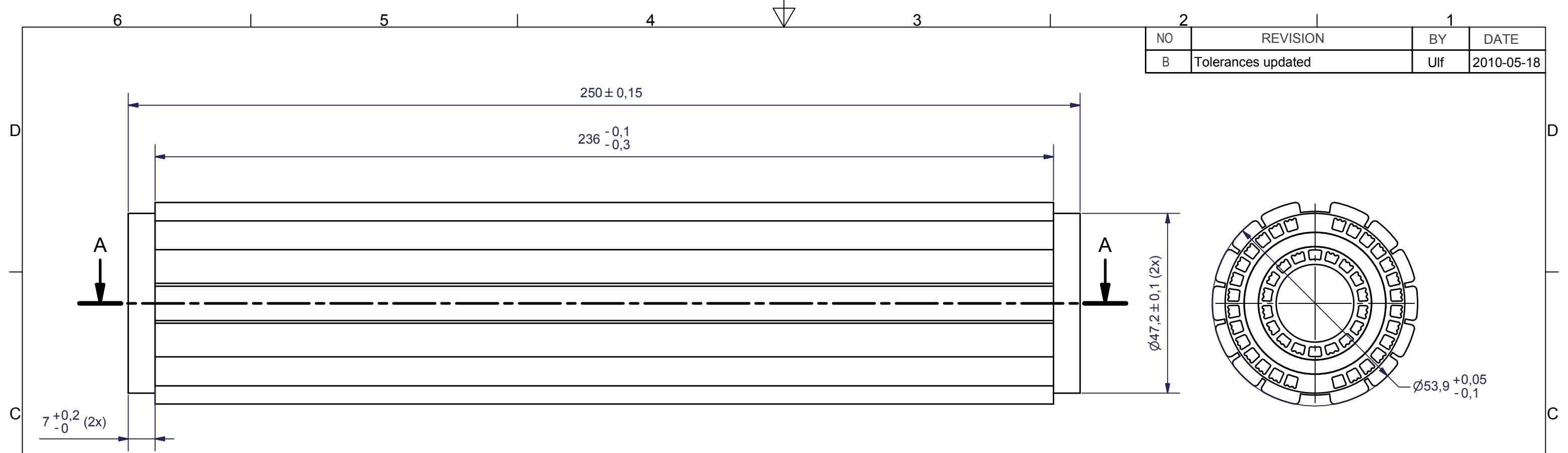
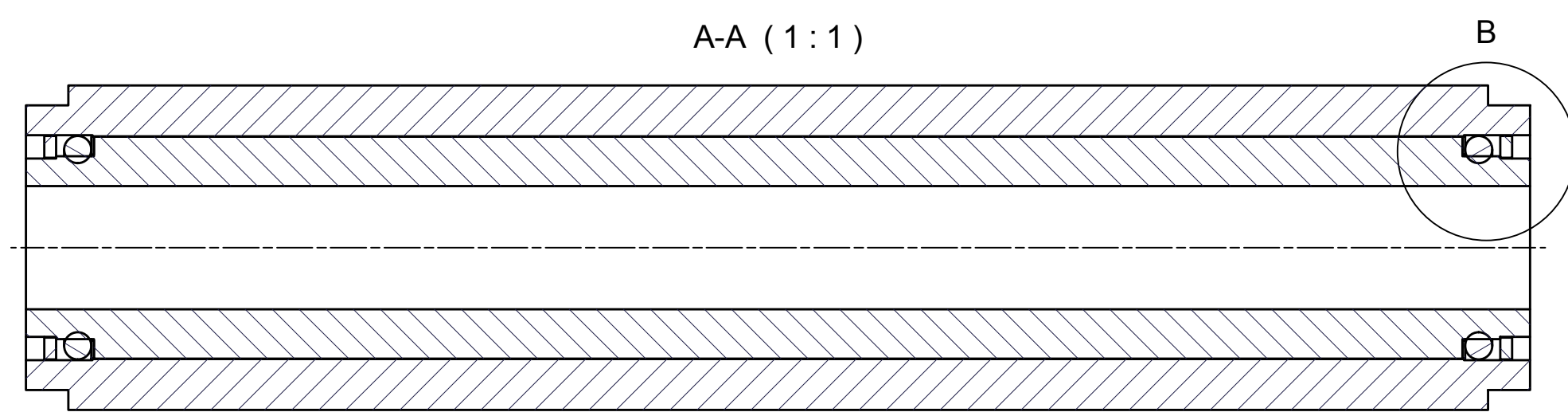


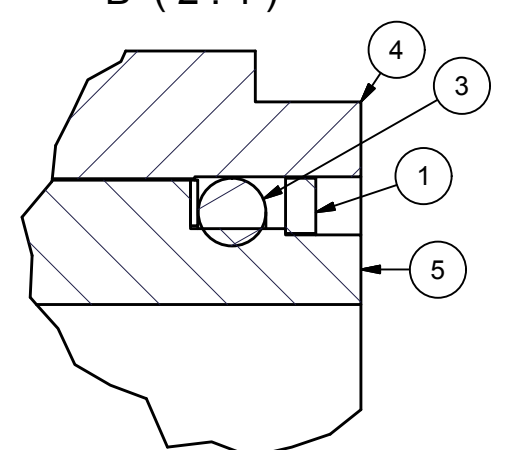
NO	REVISION	BY	DATE
B	Tolerances updated	Ulf	2010-05-18



A-A (1:1)



B (2:1)



5	1	CORE	CR00197B	D37-250
4	1	CORE	CR00163C	D54-250
3	2	O-RING	SL00061A	ø28,1x4,5 HNBR
2	2	SUPPORT RING	TB00092B	ø30,8/ø36,8/0,5
1	2	END RING	TB00090D	29,8/37,1/2
ITEM	REQD	TITLE	PART NUMBER	DESCRIPTION

This is the property of Laminova Production AB, Sweden and must not be copied without our permission, and the contents thereof must not be imparted to a third party or be used for any unauthorized purpose. Contravention will be prosecuted.	CONSTR	DRAWN BY	CHECKED	TITLE	SCALE	DATE
	Tomas	mattiasp	RH		CORE ASSEMBLY	1:1
				DESCRIPTION		REVISION
					D54-250, STANDARD INNER	B
				MATERIAL	DRAWING NO	
					CA00065B	